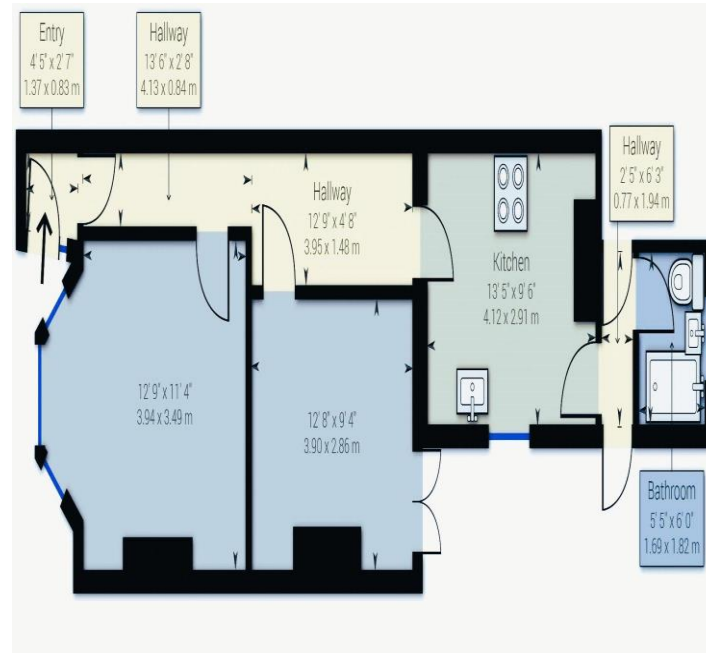




Score	Energy rating	Current	Potential
92+	A		
81-91	B		
69-80	C	70 C	78 C
55-68	D		
39-54	E		
21-38	F		
1-20	G		



To arrange an appointment to view this property or to book a valuation on your own property, contact hi residential for a professional Prompt and friendly service



Herbert Road, Plumstead, SE18 3PZ

Price Guide Price £160,000 - £170,000



24 Plumstead Common Road, SE18 3TN
 Tel: 020 8316 6616
 Email: sales@hi-residential.com
 Email: lettings@hi-residential.com
 www.hi-residential.com



24 Plumstead Common Road, SE18 3TN
 Tel: 020 8316 6616
 Email: sales@hi-residential.com
 Email: lettings@hi-residential.com
 www.hi-residential.com



Property Details

Entrance Hall

Lounge 12' 11" x 11' 5" (3.94m x 3.49m)

Kitchen 13' 6" x 9' 7" (4.12m x 2.91m)

Bedroom 1 12' 10" x 9' 5" (3.9m x 2.86m)

Bathroom 5' 7" x 5' 11" (1.69m x 1.8m)

Garden

SHORT LEASE 59 Years. Hi Residential is excited to offer a very spacious one-bedroom lower ground floor maisonette located on Herbert Road in Woolwich. This property is competitively priced to ensure a quick sale and comes with the benefit of an extended lease upon completion, making it an appealing choice for both first-time buyers and investors. Perfectly positioned for convenience, the maisonette enjoys close proximity to local bus links that provide easy access to Woolwich and beyond. Local shops are just a stone's throw away, offering all the essentials right at your doorstep. Additionally, Woolwich town centre, with its extensive array of transportation links, is approximately 1.25 miles away, making this location ideal for commuters or anyone looking to enjoy the vibrancy of the town. Offered with no forward chain, this property promises a simpler and potentially quicker transaction process. Its practical layout includes a generous living space and a comfortable bedroom, ideal for individual residents or couples seeking a cozy home environment. This maisonette combines affordability, convenience, and the potential for a swift transaction. It is an excellent opportunity that should not be overlooked. We recommend scheduling a viewing to fully appreciate what this property has to offer and to see why it should be a priority on your property viewing list. Contact Hi Residential today to discover more about this appealing Woolwich home.

