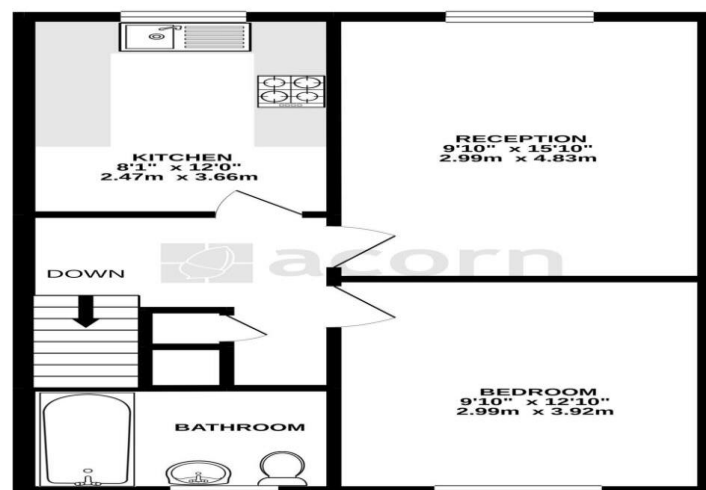




TOP FLOOR
515 sq.ft. (47.8 sq.m.) approx.



TOTAL FLOOR AREA : 515 sq ft. (47.8 sq m) approx.
Whilst every effort has been made to ensure the accuracy of the floorplan contained here, measurements of these dimensions cannot be guaranteed and are provided for information only and should not be relied upon for any other purpose. This plan is for illustrative purposes only and should be used as a guide only. Any prospective purchaser should consult the agent for further details and to view the property. Made with Metreque ©2021

To arrange an appointment to view this property or to book a valuation on your own property, contact hi residential for a professional Prompt and friendly service

Hi Residential Limited. Registered in England No. 10082765. Registered office: Heritage House, 34b North Cray Road, Bexley, United Kingdom, DA5 3LZ

24 Plumstead Common Road, SE183TN
020 8316 6616
sales@hi-residential.com
lettings@hi-residential.com
www.hi-residential.com



Hampstead Close, Thamesmead, SE28 8EL

Price £180,000 Leasehold



Hi Residential Limited. Registered in England No. 10082765. Registered office: Heritage House, 34b North Cray Road, Bexley, United Kingdom, DA5 3LZ

24 Plumstead Common Road, SE183TN
020 8316 6616
sales@hi-residential.com
lettings@hi-residential.com
www.hi-residential.com



Property Details

- Entrance Hall*
- Landing*
- Lounge 9' 10" x 15' 10" (2.99m x 4.83m)*
- Kitchen 8' 1" x 12' 0" (2.47m x 3.66m)*
- Bedroom 1 9' 10" x 12' 10" (2.99m x 3.92m)*
- Bathroom*

This one-bedroom first-floor maisonette offers a cozy retreat in Central Thamesmead, tucked away in a quiet cul-de-sac close to Thamesmead Town Centre. Upon entering, you'll find an entrance hall leading to stairs that take you to the landing area. The kitchen, open plan to the lounge, creates a seamless flow between the living spaces, ideal for modern living. The property features one double bedroom, providing a comfortable space to unwind after a long day. A bathroom completes the accommodation, offering convenience and functionality. Benefiting from gas central heating and double glazing, this maisonette ensures year-round comfort and energy efficiency. Additionally, allocated parking adds to the convenience of urban living, providing a designated space for residents. Whether you're a first-time buyer or seeking an investment opportunity, this property offers a desirable location and comfortable living spaces. Don't miss the chance to make this Central Thamesmead maisonette your own. Schedule a viewing today to explore its potential firsthand.

